

**Michael Snow**  
***A Life Survey (1955-2020)***

May 21 – December 16, 2023  
at The School

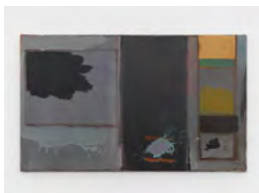
**Lobby**

1



*La Boca*, 1958  
oil on canvas  
38 x 37 inches (framed)  
Inventory #MIS58.001

2



*From Memory*, 1959  
oil on canvas  
60 1/2 x 30 1/2 inches (framed)  
Inventory #MIS59.002

3



*Eros at Lesbos*, 1962  
watercolour and paper collage on  
cardboard  
32 1/4 x 33 inches (framed)  
Inventory #MIS62.003

4



*Meeting in Milan*, 1954  
watercolor on paper  
21 3/4 x 18 1/2 inches (framed)  
Inventory #MIS54.003

**South Lobby**

5



*Adamic Auto*, 1957  
paper on board  
42 x 40 inches (paper)  
Inventory #MIS09.003

6



*Over and Under*, 1960  
oil on paper and coloured paper  
13 9/10 x 18 1/2 inches (framed)  
Inventory #MIS60.004

**Nurse's Office**

7



*Little Walk*, 1964-2005  
DVD, Plywood cut out figure  
Duration: 12 minutes, 24 seconds, looped  
Cut out figure: 66 1/2 x 16 x 14 1/2 inches  
Inventory #MIS05.007.3

**North Lobby**

8



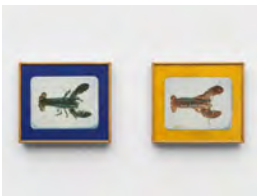
*Study for "Drum Book"*, 1960  
ink on paper  
15 1/2 x 12 4/5 inches (framed)  
Inventory #MIS60.005

9



*Study for the Walking Woman in Little Walk*, ND  
graphite on paper  
68 1/2 x 27 1/8 inches  
Inventory #MIS13.001

10



*Lobster*, 1974  
color photograph and acrylic on  
styrofoam, two panels  
16 x 18 inches (each panel)  
Inventory #MIS74.002

**Perimeter Gallery**

11



*Village Voice*, 1965  
oil on canvas  
16 3/4 x 11 3/8 inches (image)  
18 1/4 x 12 5/8 x 1 inches (framed)  
Inventory #MIS65.001

12



*Before and After*, 1960  
graphite on canvas  
70 x 40 inches  
Inventory #MIS60.006

13



*Carla Bley*, 1965  
photographic reproduction with line block  
hand printed  
29 1/4 x 23 1/2 inches (framed)  
Inventory #MIS04.026

14



*Exhibition announcement for the first  
Walking Woman exhibit*, 1964  
double-sided black & white print  
19 1/2 x 9 1/4 x 9 1/4 inches (framed)  
Inventory #MIS62.002

15



*Sweater*, 1962  
pencil drawing  
7 1/2 x 6 1/8 inches (image)  
15 3/4 x 13 3/4 x 1 1/4 inches (framed)  
Inventory #MIS04.015

16



*Underwear*, 1963  
graphite on paper  
16 1/3 x 12 inches (framed)  
Inventory #MIS63.007

17



*Dress*, 1963  
graphite on paper  
16 x 12 inches (framed)  
Inventory #MIS63.009

18



*Walking Woman in the Subway*, 1963,  
printed 2016  
color photograph  
22 x 15 inches (print)  
Inventory #MIS63.006.AP4

19



*Fol(lowe)d*, 1962  
folded pencil drawing  
6 1/4 x 7 1/2 inches (image)  
14 3/4 x 15 1/2 x 1 1/4 inches (framed)  
Inventory #MIS04.014

20



*In the Blue*, 1966  
Acrylic on printed paper  
16 1/2 x 23 inches  
Inventory #MIS04.017

21



*Banner*, c. 1994  
silkscreen on canvas  
71 3/8 x 29 3/8 inches  
Inventory #MIS04.005

22



*New York Eye And Ear Control Walking Woman*, 1964  
plywood, hardware, paint  
64 x 24 x 24 inches  
Inventory #MIS64.002

23



*Blood Relation*, 1965  
rolled, painted transparent plastic  
11 7/8 x 7 3/4 x 8 3/8 inches with base  
Inventory #MIS05.004

24



*New York Eye and Ear Control*, 1964  
black and white photograph  
5 x 7 inches (print)  
12 x 14 1/8 x 1 1/2 inches (framed)  
Inventory #MIS64.001

25



*Foreplay*, 1966  
pencil rubbing  
12 3/4 x 7 1/8 inches (image)  
21 1/4 x 15 1/4 x 1 1/4 inches (framed)  
Inventory #MIS04.010

26



*Grey Walking Woman*, n.d.  
card on board  
20 x 11 1/2 inches (board)  
Inventory #MIS23.001

27



*Ancient Walking Woman*, 1961-62  
oil on canvas wrapped panel on metal and  
wooden base  
16 x 21 3/5 inches (panel)  
6 x 9 x 3 9/10 inches (base)  
Inventory #MIS61.004

28



*Interior*, 1963  
oil on canvas over wood construction  
59 5/8 x 16 3/8 x 7 7/8 inches  
Inventory #MIS63.005

29



*Airplane Ace*, 1937  
ink on cardboard (two-sided panel)  
16 3/4 x 15 3/4 inches  
Inventory #MIS37.001

30



*From the Catalogue of the King's Dancers*, 1954  
mixed media on paper  
22 3/4 x 17 3/4 inches (framed)  
Inventory #MIS54.002

31



*Smoker*, 1953  
watercolor on paper  
20 x 17 3/4 inches (framed)  
Inventory #MIS53.003

32



*Naturaleza Muerta Optica (study for Ocul)*,  
1953  
ink on paper  
14 1/2 x 18 1/2 inches (framed)  
Inventory #MIS53.001

33



*Drawing*, 1956  
blue ink on paper  
18 3/4 x 17 inches  
Inventory #MIS55.005

34



*Believing*, 1979  
watercolor  
15 x 33 inches  
16 3/4 x 34 3/4 inches (framed)  
Inventory #MIS79.007

35



*Notre Dame*, 1953  
gouache on paper  
26 1/2 x 18 1/5 inches (framed)  
Inventory #MIS53.005

36



*6 Female Figures (one clothed)*, 1955  
ink on paper  
13 5/8 x 8 inches (paper)  
20 1/2 x 14 5/8 x 1 inches (framed)  
Inventory #MIS55.001

37



*New Fayoum*, 1953  
tempera on cardboard  
12 3/4 x 9 3/4 inches (framed)  
Inventory #MIS53.004

38



*Fast Figure I*, 1960  
ink on paper  
29 1/2 x 22 inches (framed)  
Inventory #MIS60.007

39



*Legs Page*, 1962  
graphite on paper  
16 x 11 3/4 inches (framed)  
Inventory #MIS62.004

40



*Pastel Skirt*, 1962  
pencil and pastel drawing  
9 1/2 x 6 1/2 inches (image)  
17 3/4 x 14 x 1 1/4 inches (framed)  
Inventory #MIS04.016

41



*Cleaving*, 1963  
graphite on paper  
19 1/4 x 14 inches (image)  
40 1/8 x 34 1/8 x 3/4 inches (framed)  
Inventory #MIS63.001

42



*Psychedelic Celluloid Torso*, 1972  
multi-colored celluloid  
20 3/4 x 11 1/2 inches (print)  
31 1/2 x 22 3/4 x 1 1/2 inches (framed)  
Inventory #MIS72.001A

### Video Room

43



*Wavelength*, 1967  
two file prints, one 16mm film projector  
45 minutes with sound  
Inventory #MIS67.001

44



*WVLNT: WAVELENGTH for those who don't have the time: Originally 45 minutes, Now 15!*  
, 2003  
DVD video, 15 minutes  
Inventory #MIS03.002

### Main Space

45



*Serve, Deserve*, 2009  
DVD projection onto a table tops  
13 min. 30 sec. loop, silent  
Inventory #MIS10.003

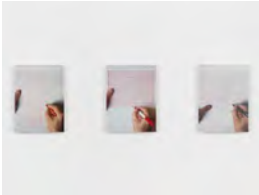


46



*The Viewing of Six New Works*, 2012  
7 looped video projections, silent  
Greg Hermanovic (Derivative) -  
TouchDesigner recording technology  
Inventory #MIS11.001

47



*Redrawing [3/3]*, 2012  
laminated color photographs, 3 panels  
8 3/8 x 11 1/4 inches (each panel)  
Inventory #MIS12.001

### Second Floor Alcove

48



*Study for Sight*, 1967  
ink, graphite, colored pencil, tape and  
paper collage on two sheets of paper  
16 1/2 x 12 1/8 inches (sheet)  
18 1/2 x 14 x 1 inches (framed)  
Inventory #MIS67.005

49



*Slidlength*, 1969-71  
80 35 mm slides and projector projected  
slowly at 2 meters wide  
Inventory #MIS10.005.AP1

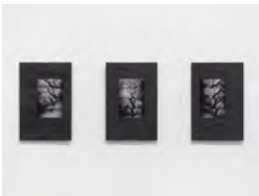
50



*Branching*, 2002  
set of five black and white photographs in  
clip frames  
each: 10 x 8 inches (print)  
Inventory #MIS02.002

### North Hall

51



*One Two Tree*, 2002  
set of 3 black and white photographs in  
clip frames  
each, 10 x 8 inches (print)  
Inventory #MIS02.003

### Girls' Bathroom

52



*Flash! 20:49 15/6/2001*, 2001  
Laminated color photo on aluminium  
48 x 72 inches (print)  
Inventory #MIS04.004.1

### Northeast Classroom

53



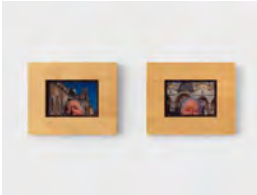
*Over the Sofa*, 1992-96  
acrylic on canvas with color photo  
36 x 48 inches  
Inventory #MIS04.021

54



*Engraving Jim (Male Heir)*, 2003  
Black and White photo  
83 5/8 x 42 inches  
Inventory #MIS04.006.1

55



*Venetian Blind Revisited*, 1999  
2 framed photographs  
each, 11 x 9 inches (print)  
Inventory #MIS99.001

56



*D'abord Alcibiade et puis...*, 1996  
colour photograph and wooden frame  
43 3/8 x 57 1/2 inches  
Inventory #MIS96.001

57



*Still Living (9x4 Acts, Scene 1)*, 1982  
portfolio of 9 pages with a total of 36 color  
photos 1 title page  
10 pages, each: 22 x 17 1/2 inches  
(framed)  
Inventory #MIS82.003.8

### Northwest Classroom

58



*Piano Sculpture*, 2009  
Synchronized 4-DVD projection  
14 min. loop, sound  
Inventory #MIS10.002

### Principal's Office

59



*Wild Flower Bed*, 1977  
coloured photographs on linen  
51 1/10 x 98 2/5 inches  
Inventory #MIS77.005

60



*Close Up*, 1979  
oil on canvas and colour photograph on board, two panels  
29 9/10 x 112 inches (painting)  
2 x 7 inches (photograph)  
Inventory #MIS79.006

61



*Paris de jugement Le and/ or State of the Arts*, 2003  
Photograph on cloth  
72 x 76 inches  
Inventory #MIS04.002

62



*Powers of Two*, 2003  
4 Transparent photos  
48 x 102 inches (each panel)  
Inventory #MIS04.001

63



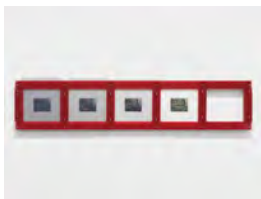
*Saw*, 2008  
inkjet print on Arches paper  
22 1/2 x 15 1/2 inches (paper)  
26 1/2 x 19 inches (framed)  
Inventory #MIS08.001.1

64



*The Virgin (After Lippi)*, 2002  
colour photograph and colour reproduction  
60 x 18 4/5 inches (photograph)  
24 x 30 3/10 inches (reproduction)  
Inventory #MIS02.001

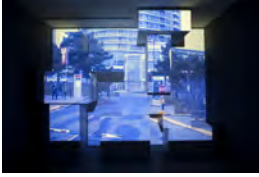
65



*Amplast Inc.*, 1967  
Red framed polaroid photographs with plastic overlay  
11 1/4 x 51 x 3/4 inches (framed)  
Inventory #MIS05.003

### Southwest Classroom

66



*The Corner of Braque and Picasso Streets, 2009*  
Real-time video projection  
Edition of 4, with 1 artist proof  
Inventory #MIS10.007

### Southeast Classroom

67



*Fish Story, 1979*  
Color photos on acrylic paint, wood frame  
61 x 32 inches (print)  
66 5/8 x 37 5/8 x 1 inches (framed)  
Inventory #MIS04.022

68



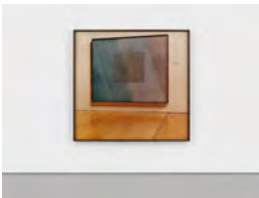
*X60, 1979*  
color photograph face mounted to plexi  
49 1/2 x 87 1/2 x 2 inches (framed)  
Inventory #MIS79.002.A/P

69



*Multiplication Table, 1977*  
Plastic-laminated color photograph  
mounted on wall and floor  
43 3/4 x 75 3/8 inches  
Inventory #MIS77.001.AP

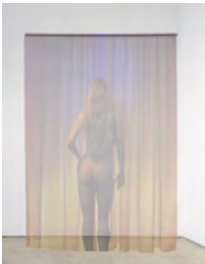
70



*Times, 1979*  
photograph  
74 1/4 x 77 1/8 inches (print)  
73 3/4 x 76 3/4 x 2 1/4 inches (framed)  
Inventory #MIS09.001.AP

### Boys' Bathroom

71



*VUE3UV, 1998*  
Color photo on cloth on plastic tube  
68 x 51 inches  
Inventory #MIS04.023

**Southeast Unfinished Classroom**

72



*Cityscape*, 2019  
Digital video  
Duration 08:27  
Inventory #MIS19.001

**Southwest Unfinished Classroom**

73



*That/Cela/Dat*, 2000  
DVD projection  
60 min. loop  
Inventory #MIS10.004.1

**Southeast Unfinished Classroom**

74



*SSHTOORRTY (Short Story)*, 2005  
DVD projection (transferred frm 35mm)  
1 min. 45 sec. loop, sound  
Inventory #MIS05.005.EP

**First Floor Boys' Bathroom**

75



*Solar Breath (Northern Caryatids)*, 2002  
DVD projection  
60 minute loop with sound  
Inventory #MIS07.001.EP

**Southwest Classroom, First Floor**

76



*Monocular Abyss*, 1982  
modeled epoxy, and painted pale green  
(latex)  
17 3/4 x 43 1/4 x 39 3/8 inches  
Inventory #MIS82.002

77



*Abitibi*, 1969  
plywood, varnish, epoxy resin, and steel  
bolts  
104 x 56 x 6 inches  
Inventory #MIS69.001

78



*Handed to Eyes*, 1983  
oil on chromogenic photograph  
48 1/2 x 40 inches (print)  
Inventory #MIS04.020

79



*Site*, 1969-2016  
stainless steel, text card  
68 x 28 x 28 inches  
Inventory #MIS69.008

**Reading Room**

80



*3 Mailers for exhibition announcement*,  
1961  
folded exhibition announcements  
29 x 8 1/2 inches (framed)  
Inventory #MIS61.005

81



*Snow - The Isaacs Gallery (March 1974)*  
*exhibition announcement (framed)*, 1974  
printed matter  
11 1/4 x 14 1/4 inches (framed)  
Inventory #MIS74.003

82



*Snow - The Isaacs Gallery (October 1979)*  
*exhibition announcement*, 1979  
printed matter  
7 1/4 x 5 1/4 inches (framed)  
Inventory #MIS79.008

83



*Snow - Bykert Gallery (March 1971)*  
*exhibition announcement*, 1971  
printed matter  
14 x 8 inches  
13 x 8 1/4 inches (framed)  
Inventory #MIS71.002

84



*Snow - Poindexter Gallery announcement,*  
1964  
printed matter  
14 1/4 x 11 1/4 inches (framed)  
Inventory #MIS64.003

85



*La Région Centrale,* 1970  
black and white photograph  
5 x 7 inches (print)  
12 x 14 1/4 x 1 1/2 inches (framed)  
Inventory #MIS70.003

86



*In a Room,* 1956  
blue ink on paper  
24 3/4 x 22 3/4 inches (framed)  
Inventory #MIS56.004