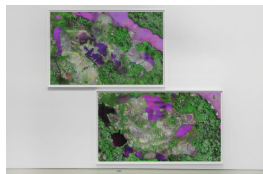
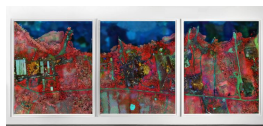


Richard Mosse
Broken Spectre
January 12 - March 16, 2024



Juvencio's Mine, Pará, 2020
 archival pigment print
 59 x 90 3/4 inches (print, upper panel)
 63 1/8 x 95 1/4 x 2 1/2 inches (framed, upper panel)
 55 x 97 1/2 inches (print, lower panel)
 59 1/8 x 101 7/8 x 2 1/2 inches (framed, lower panel)
 Edition of 5, with 2APs
 Inventory #RIM21.001



Senador José Porfirio, Pará, 2021
 archival pigment print
 78 1/2 x 63 inches each panel (unframed)
 83 x 67 1/2 x 2 1/2 inches each panel (framed)
 83 x 208 1/2 x 2 1/2 inches overall triptych with 3" spacing (framed)
 Edition of 5, with 2APs
 Inventory #RIM21.002



*Oil Spill on Kichwa Territory II,
 Block 192, Rio Tigre, Loreto, 2023*
 c-print
 48 x 64 inches (print)
 Edition of 5, with 2AP
 Inventory #RIM23.004



*Oil Spill on Kichwa Territory I,
 Block 192, Rio Tigre, Loreto, 2023*
 c-print
 48 x 64 inches (print)
 Edition of 5, with 2AP
 Inventory #RIM23.003



Broken Spectre, 2018 - 2022
four channel video installation with 12.2
surround sound
74 minutes 11 seconds
15,360 x 2,160 pixel resolution
Edition of 8, with 2 artist proofs
Inventory #RIM19.019